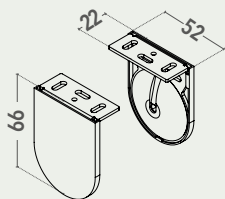
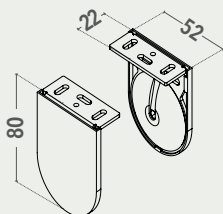


dimensioni espresse in mm  
dimensions shown in mm

52x66



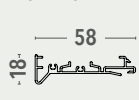
52x80



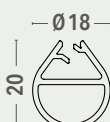
RULLO TUBE



PROFILO DI PREMONTAGGIO  
ALUMINIUM FRAME



F21 - SERIE 2012



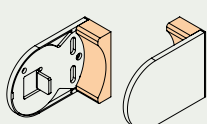
FQ20



FR23



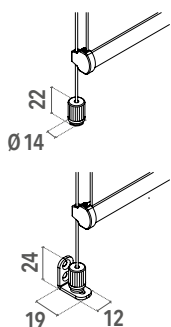
COPRIVITI  
SCREW COVER PLUGS



### VARIANTI - OPTIONAL

- Fondale FR23 e cavo perlon Ø 1,2 mm con tenditore per fissaggio piano orizzontale, con staffe in acciaio per piano verticale, a supplemento

FR23 hem bar and Ø 1.2 mm perlon cable with cable tensioning block for window sill/floor mounting or brackets for wall mounting, on supplement



### CARATTERISTICHE - CHARACTERISTICS

- Tipo di applicazione:** verticale - *Application:* vertical
- Ambiente di applicazione:** interno - *Installation:* indoor
- Staffe di fissaggio:** 52x66 mm in ferro verniciato con copri staffe in PVC (bianco, nero, grigio) complete di copriviti; staffa 52x80 mm su richiesta. A supplemento copri staffe magnetici in alluminio satinato o verniciato bianco RAL 9003 opaco  
*Brackets:* 52x66 mm steel powder coated brackets with PVC covers (white, grey, black) with screw cover plugs; 52x80 mm on request. Supplement for satin finish or matt white aluminium magnetic bracket covers
- Rullo di avvolgimento:** Ø 39 mm in alluminio estruso con ogiva  
*Roller tube:* Ø 39 mm extruded aluminum tube with slot
- Fondale:** F21 Serie 2012 o quadrato FQ20 entrambi in alluminio estruso con tappi in PVC. Fondale FR23 con la variante guida cavo perlon  
*Hem bar:* F21 Serie 2012 or squared FQ20, extruded aluminum hem bar with PVC caps. FR23 hem bar supplied with guided blind with cable
- Manovra:** a catena con comando frizionato EASY LOCK in PVC completo di calotta lato opposto con perno rientrante. Catena passo 6 in nylon con grani in PVC Ø 4,5 mm dotata di sgancio di sicurezza "child safety device" secondo la norma UNI EN13120:2014. Catena metallica a supplemento  
*Operation:* EASYLOCK chain operation. Opposite side end plug with retractable pin. Ø 4,5 mm PVC/nylon bead chain, 6 mm pitch, with incorporated child safety device - UNI EN13120:2014. Steel chain on supplement
- Fissaggio:** a parete o a soffitto. A supplemento profilo di premontaggio in alluminio estruso verniciato  
*Mounting:* wall or ceiling. Supplement for powder coated premounting frame

### COLORI STANDARD - STANDARD COLOURS

fondali e profilo premontaggio hem bars and premounting frame colours

	bianco Ral 9010 - white Ral 9010		grigio Ral 7016 opaco - matt grey Ral 7016
	bianco Ral 9016 opaco - matt white Ral 9016		grigio micaceo liscio - smooth micaceous grey
	avorio Ral 1013 - ivory Ral 1013		nero Ral 9005 opaco - matt black Ral 9005
	marrone Ral 8017 - brown Ral 8017		argento anodizzato - silver anodised

staffe di fissaggio brackets colours

	bianco Ral 9010 - white Ral 9010		nero Ral 9005 opaco - matt black Ral 9005
	grigio Ral 9006 - grey Ral 9006		

### TESSUTI ABBINABILI - SUITABLE FABRICS

- Idonea per tessuti leggeri fino a 350 g/m<sup>2</sup>  
Consultare la **TABELLA A - UTILIZZO TESSUTO** nella sezione tessuti  
*Suitable for lightweight fabrics (up to 350 g/m<sup>2</sup>)*  
Consult **TAB A - FABRICS** in fabric section

### SUPPLEMENTI - SUPPLEMENT



### NOTE - NOTES

- Fondale in alluminio estruso FR23 in abbinamento alla variante con cavi  
*Guided blind with cables supplied with FR23 extruded aluminium hem bar*

➔ **PER UNA PIÙ MORBIDA MANOVRABILITÀ VEDI VERSIONE CON CATENA COMBINATA F 102**  
**FOR SMOOTHER OPERATION USE VERSION F 102 COMBINED CHAIN OPERATION**

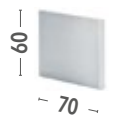


#### VARIANTI COPRI STAFFE MAGNETICI OPTIONAL MAGNETIC BRACKET COVER

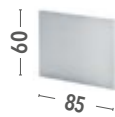
- Copri staffe magnetici in alluminio satinato o verniciato bianco RAL 9003 opaco, a supplemento.

*Satin finish or matt white aluminium magnetic bracket covers, on supplement.*

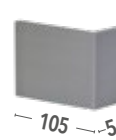
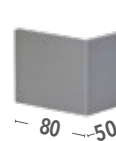
#### DECISO



#### SINUOSO



#### A PARETE WALL MOUNTING



#### A SOFFITTO CEILING MOUNTING

